



SAN RAFAEL TRANSPORTATION CENTER



Relocation Analysis, Environmental Clearance, and Preliminary Design

Community Open House #1 – March 20th, 2018, 5:30 – 7:00 PM

Raymond Santiago, GGBHTD Project Manager

Consultant Team:

Adam Dankberg, Kimley-Horn and Associates

Eileen Goodwin, Apex Strategies

Kimley»Horn

apex
STRATEGIES

CIVIC
EDGE
CONSULTING

VIA



SAN RAFAEL TRANSPORTATION CENTER

Relocation Analysis, Environmental Clearance, and Preliminary Design



Open House Agenda

- Welcome
- Brief Presentation
- Input Session
- Wrap-up



SAN RAFAEL TRANSPORTATION CENTER

Relocation Analysis, Environmental Clearance, and Preliminary Design



What Services are Available at the Transit Center?



MARIA AIRPORTER





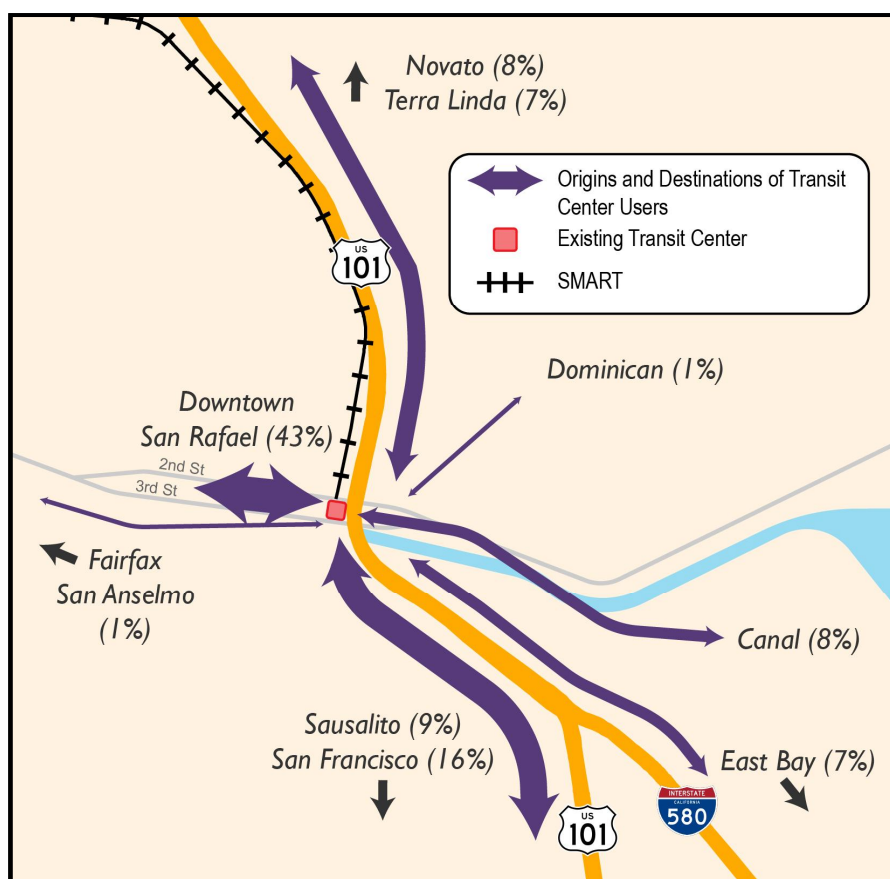
SAN RAFAEL TRANSPORTATION CENTER

Relocation Analysis, Environmental Clearance, and Preliminary Design



How is the Transit Center Used?

- 9,000 daily bus ons and offs
- Over 500 bus trips a day
- SMART connectivity
- Start and end point for many riders' trips





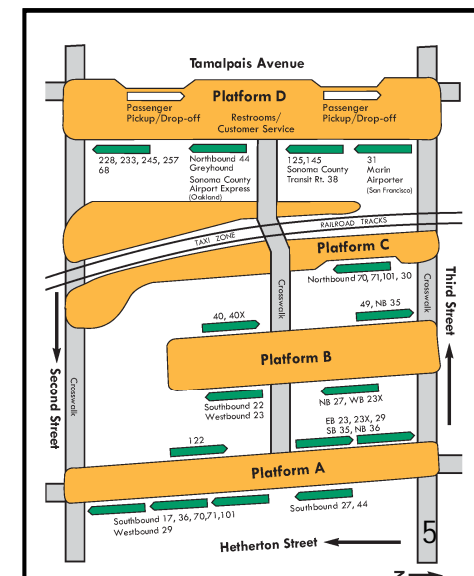
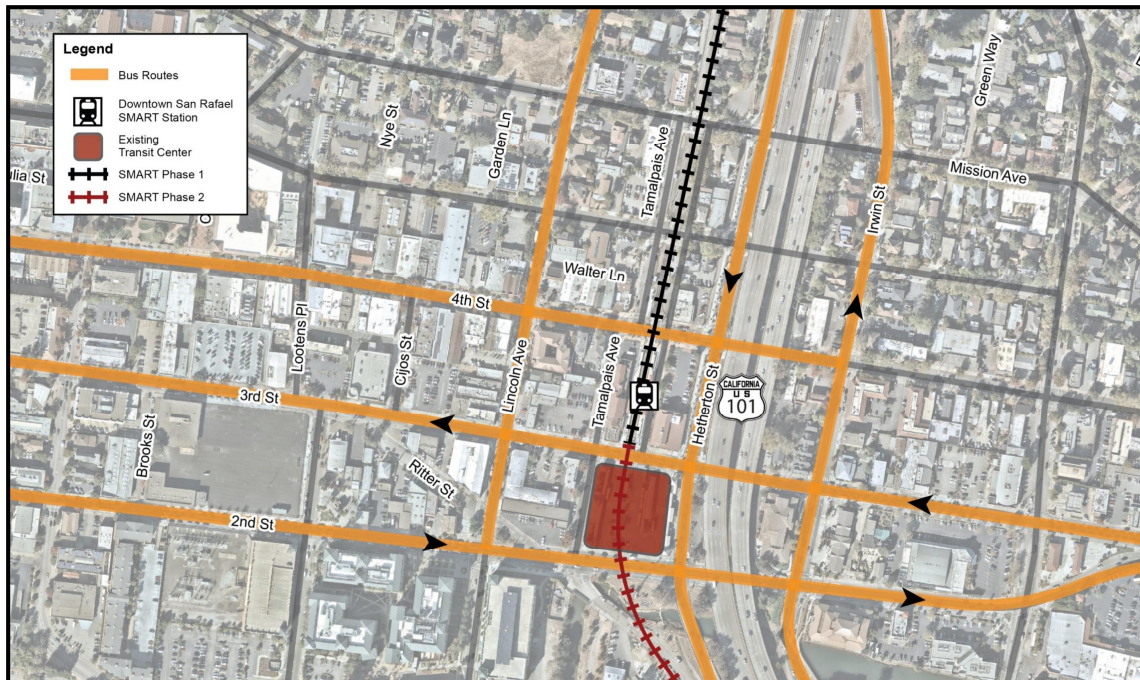
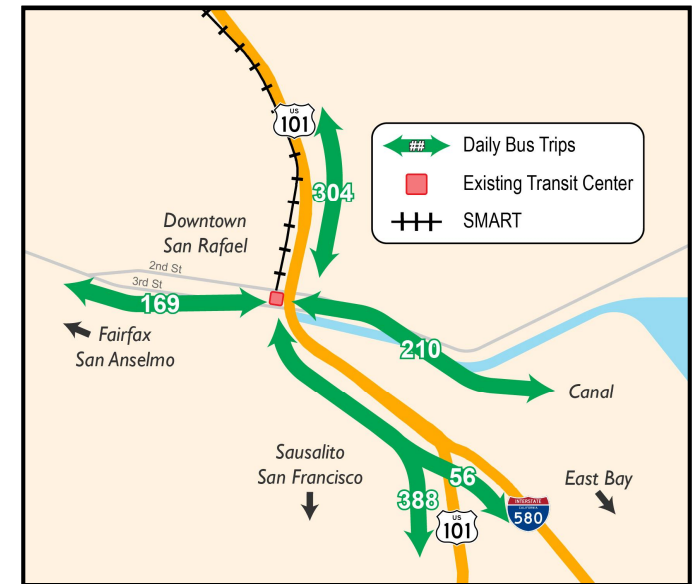
SAN RAFAEL TRANSPORTATION CENTER

Relocation Analysis, Environmental Clearance, and Preliminary Design



How is the Transit Center Used?

- Crossroads of transit in Marin County
- All bays at transit center currently used
- Bus trips to/from all directions





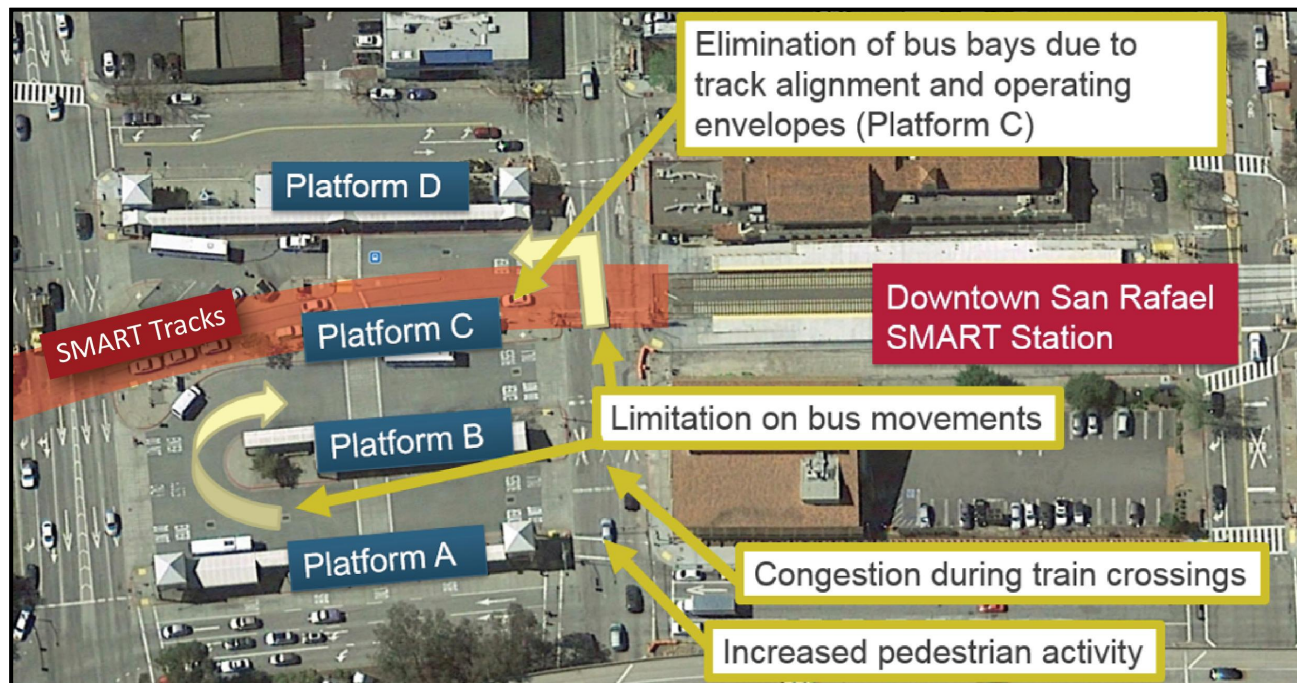
SAN RAFAEL TRANSPORTATION CENTER

Relocation Analysis, Environmental Clearance, and Preliminary Design



Why a New Transit Center?

- SMART extension to Larkspur will bisect the current location with two tracks
- Reduces the amount of space available in the transit center





SAN RAFAEL TRANSPORTATION CENTER



Relocation Analysis, Environmental Clearance, and Preliminary Design

Study Area





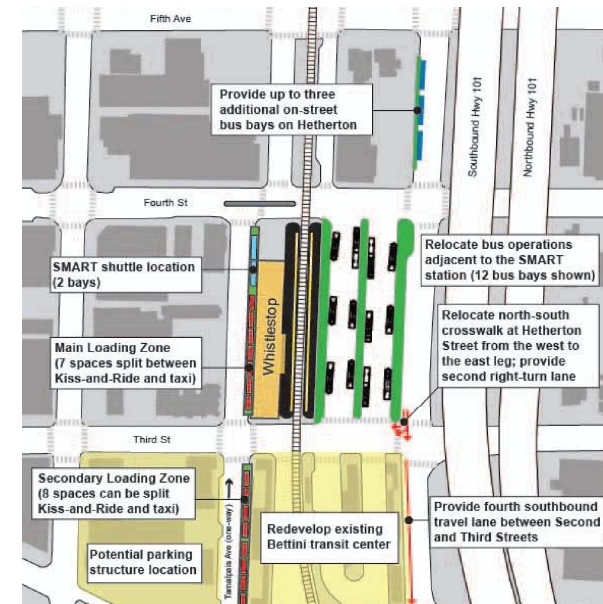
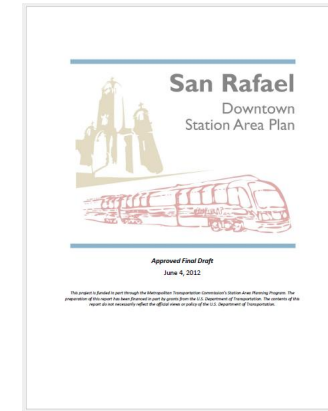
SAN RAFAEL TRANSPORTATION CENTER

Relocation Analysis, Environmental Clearance, and Preliminary Design



Prior Studies and Analyses

- Downtown Station Area Plan (2012)
 - People are safe and comfortable walking as they transfer easily from one mode to another
 - Clear, safe and pleasant connections between the transit center and the surrounding neighborhoods
 - Safe for pedestrians and bicyclists to get to, around and through this area
 - Station provides a sense of arrival into Downtown
 - Led by City of San Rafael





SAN RAFAEL TRANSPORTATION CENTER

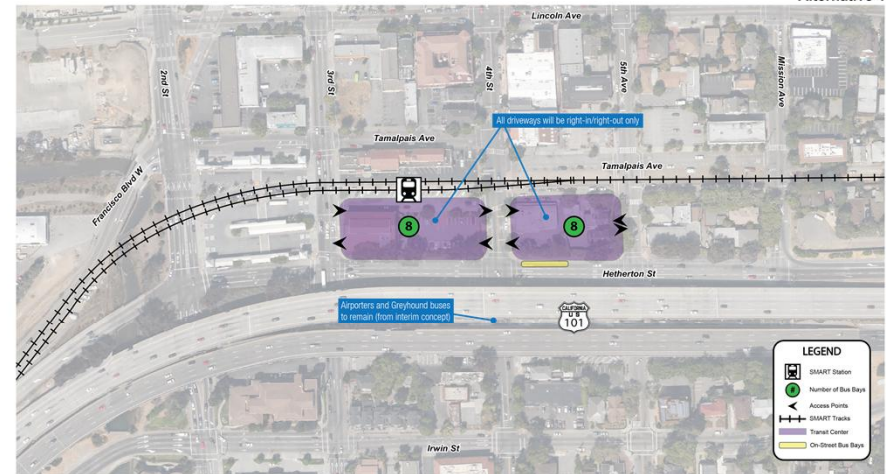
Relocation Analysis, Environmental Clearance, and Preliminary Design



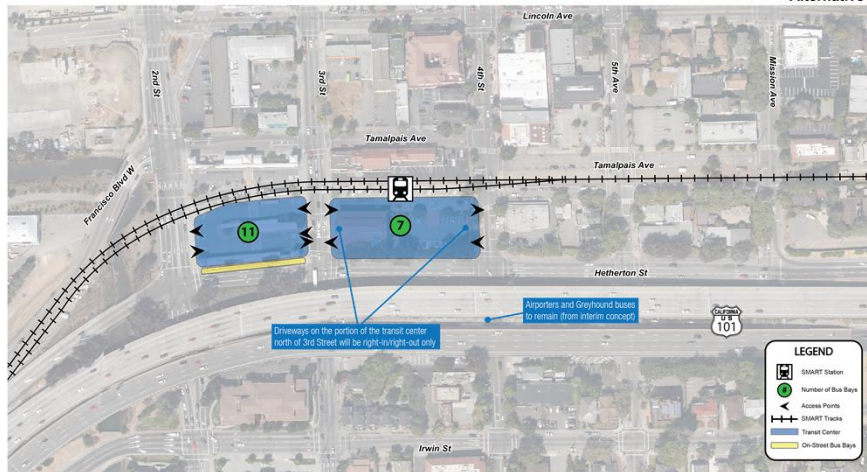
Prior Studies and Analyses

- San Rafael Transit Center Relocation Study (2017)
 - Initial nine concepts with three analyzed in detail
 - Led by City of San Rafael in partnership with transit agencies and TAM

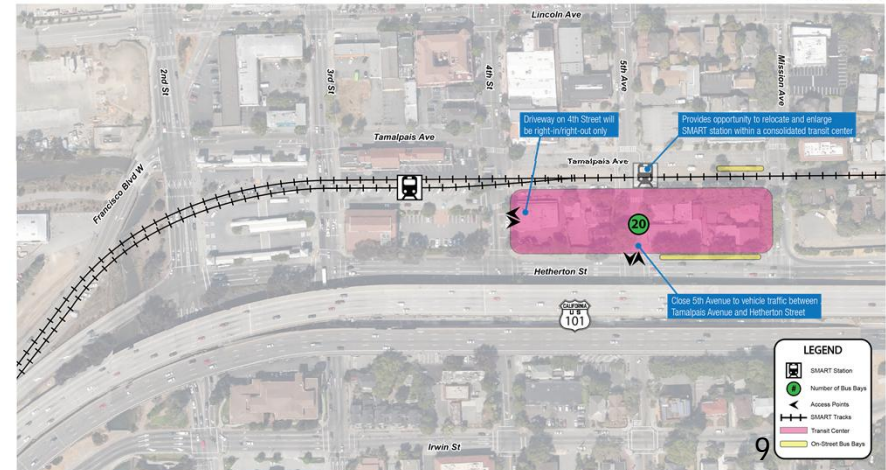
Alternative 4



Alternative 2



Alternative 5





SAN RAFAEL TRANSPORTATION CENTER

Relocation Analysis, Environmental Clearance, and Preliminary Design



Prior Studies and Analyses

- Neither study developed a preferred concept
- This effort is re-examining background conditions, facility requirements, and identifying concepts



Key Considerations for a Replacement Transit Center

High Quality Patron Experience

- Intuitive wayfinding
 - Safe + Secure
- Comfortable waiting spaces
 - Clean and easy to maintain
- Sustainable designs with green elements

Create an intuitive, and comfortable patron experience.

Transit Choices that Work

- Capacity of passengers
- Efficient bus routing
 - Reliable
- Flexibility for future bus service
- Good integration between transit services

Ensure future operational efficiencies, and bus layover space.

Integrated with Downtown

- Design for Transit and Non-transit users
- Have things to do while waiting
- Connect businesses with commuters and students
- Easy navigation to and from the Center

Create a center that is activated, visible and well connected.



SAN RAFAEL TRANSPORTATION CENTER

Relocation Analysis, Environmental Clearance, and Preliminary Design



Project Process

Identification of Transit Center Alternatives

Build on the previously prepared Relocation Study and identify potential transit center sites and configurations.

Environmental Analysis

Identify potential environmental impacts associated with the project.

Preliminary Engineering

Prepare initial designs for the transit center.

Final Design & Construction

(not a part of this study)

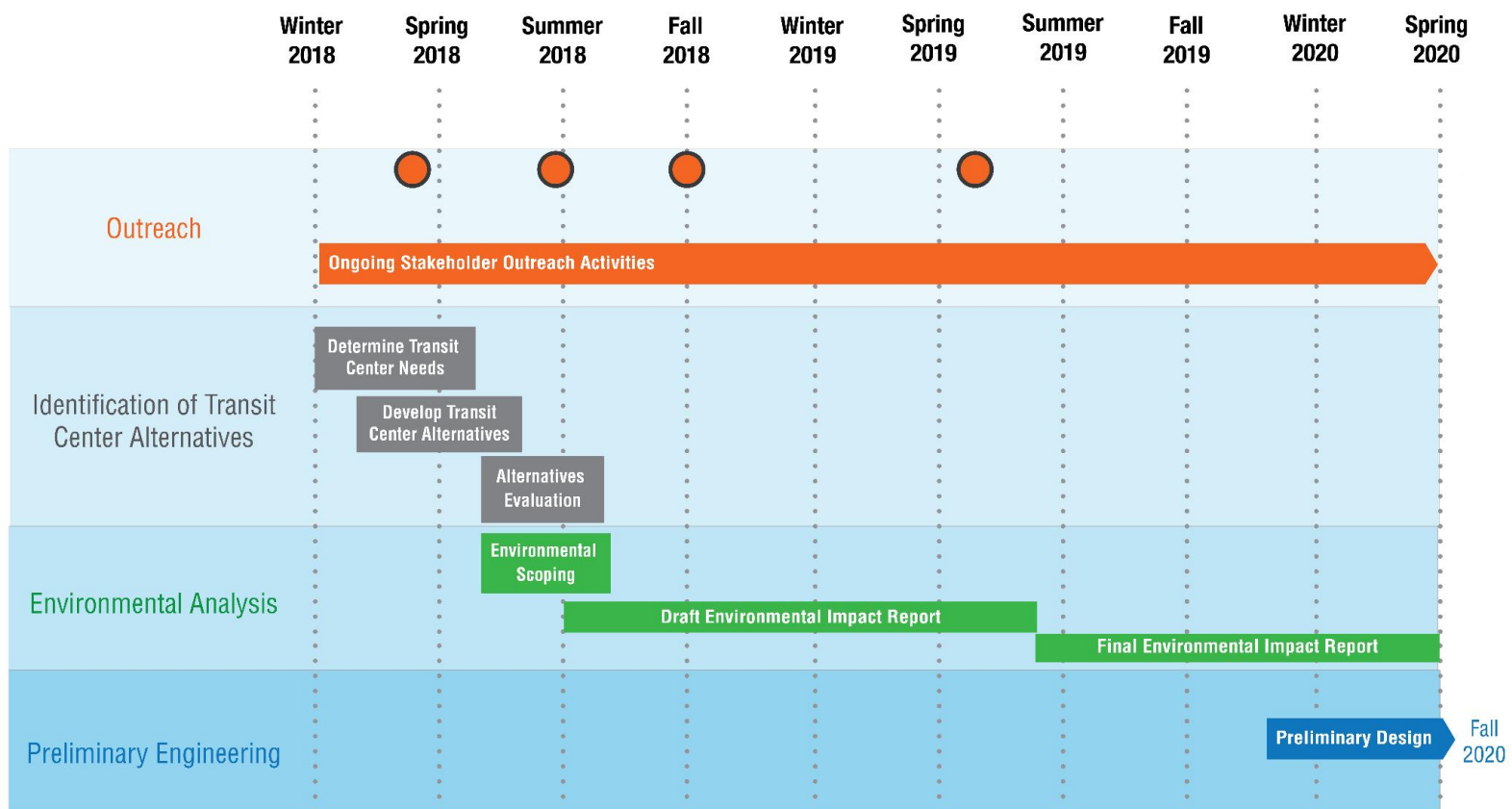


SAN RAFAEL TRANSPORTATION CENTER

Relocation Analysis, Environmental Clearance, and Preliminary Design



Project Schedule



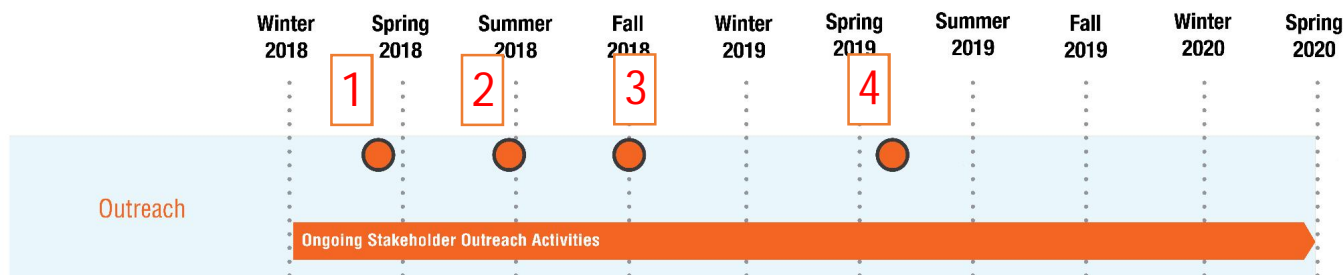
● Community engagement activities include: Meetings, presentations, online surveys and in-person engagement at the transit center

Subject to change depending on project process



Opportunities for Public Input

- Four phases of public engagement
 1. Listening (Current Cycle)
 2. Input on Specific Ideas or Concepts
 3. Identification of Alternative(s) for Environmental Analysis
 4. Share Findings of Environmental Analysis
- A combination of open houses, smaller-scale meetings, online forums, stakeholder engagement, and presentations to agency boards/committees





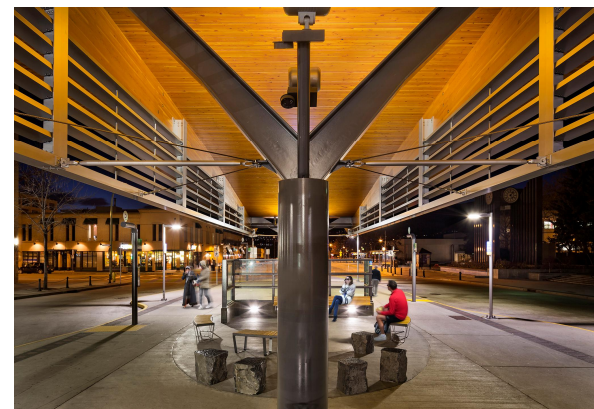
SAN RAFAEL TRANSPORTATION CENTER

Relocation Analysis, Environmental Clearance, and Preliminary Design



What We Want to Hear From You!

- How do you currently use the transit center?
- As we begin considering locations, what factors should we be taking into account?
- What elements of a new transit center do you think are most important?





SAN RAFAEL TRANSPORTATION CENTER

Relocation Analysis, Environmental Clearance, and Preliminary Design



Project Contact Information

- E-mail: SRTC@goldengate.org
- Phone: (415) 257-4444 (dedicated project line)
- View our website at: GoldenGate.org/SRTC
- Take our survey:
 - In English: bit.ly/SRTCEnglish
 - En Español: bit.ly/SRTCEspanol